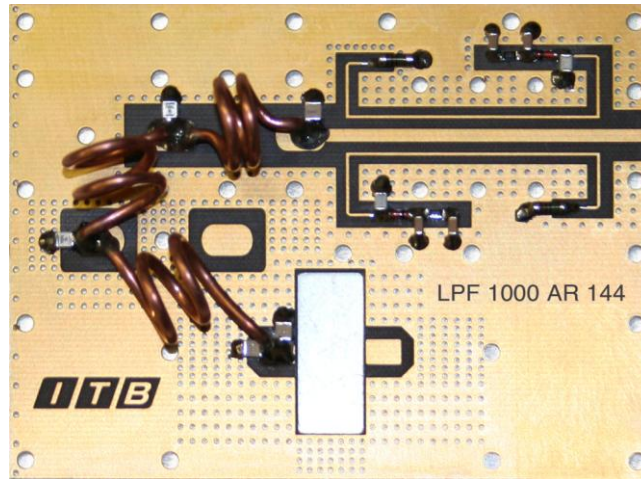


1 KW 144 MHz LOW PASS FILTER

DISCONTINUOS SERVICE



GENERAL CHARACTERISTICS

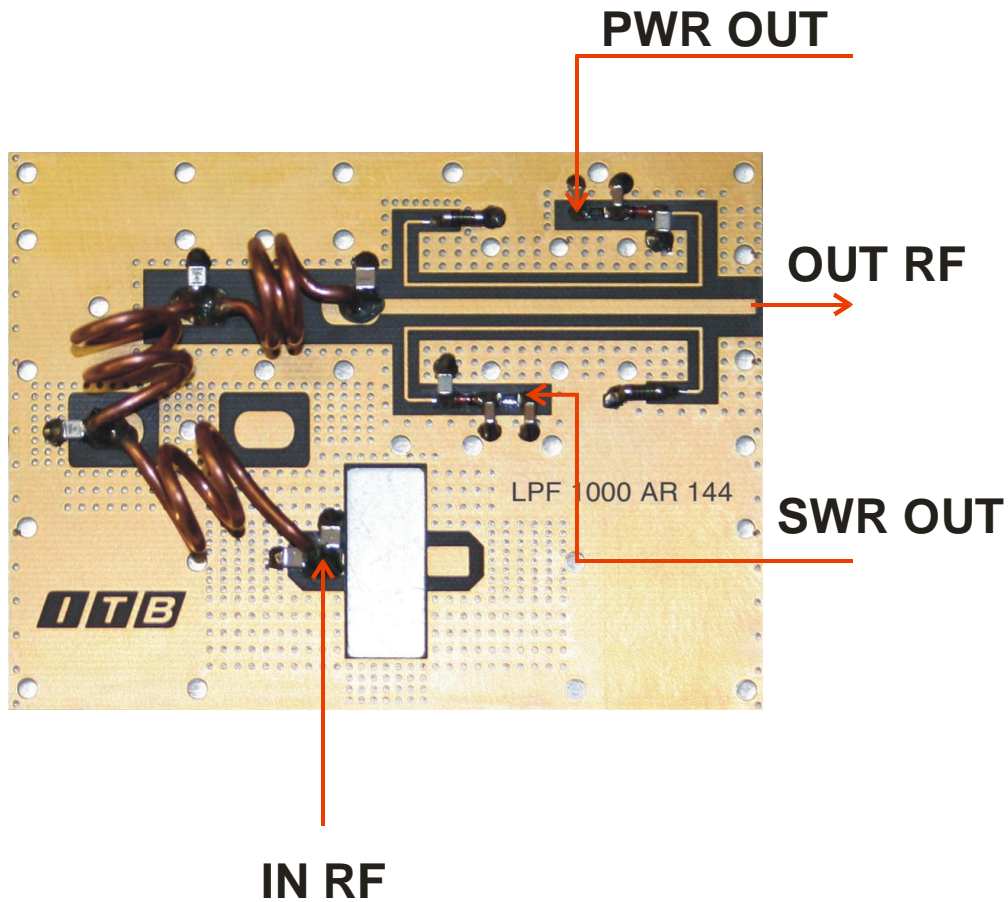
Frequency Range	142 ÷ 146 MHz
Input Power MAX	1000 W
S.W.R. input (@ 144 MHz)	≥ - 30dB
Insertion Loss	≤ 0,18 dB
second harmonic attenuation (@ 144 MHz)	≥ - 60 dBc
Input – Output Impedance	50 Ω
PC Board	Teflon
Working Temperature	0 ÷ 80°C MAX
Weight	100 g. ± 2%
Dimension	100 X 75 mm
Measure Direct Power	
Measure Reflected Power	

OPTIONS

OPTION
OPTION

* The above data is purely indicative, Italab may vary them without any warning

Contact Italab Communications +39 02 90389417 – Fax : 0039 02 23168389 or visit www.italab.it for a complete listing



Outputs "PWR OUT" and "SWR OUT", give a DC voltage which should best be elaborated at length to optimize the reading of an analog instrument to 100 μ A.

We recommend that you use only and only 50 Ω cable Teflon for connections "IN - OUT" because the energy involved is substantial (@ 1 kW).
Use of adequate support for fixing screws in the holes prepared, but 2.5.

Le Uscite “ **PWR OUT** “ e “**SWR OUT**”, danno una tensione continua che v \grave{a} opportunamente elaborata al fine di ottimizzare la lettura su uno strumento analogico da 100 μ A.

Si consiglia di usare solo e unicamente cavo 50 Ω in teflon per le connessioni “ IN – OUT in quanto l’energia in gioco \grave{e} notevole (@ 1 KW).
Usare per il fissaggio su adeguato supporto viti 2.5 ma nelle forature predisposte.

Contact Italab Communications +39 02 90389417 – Fax : 0039 02 23168389 or visit www.italab.it for a complete listing